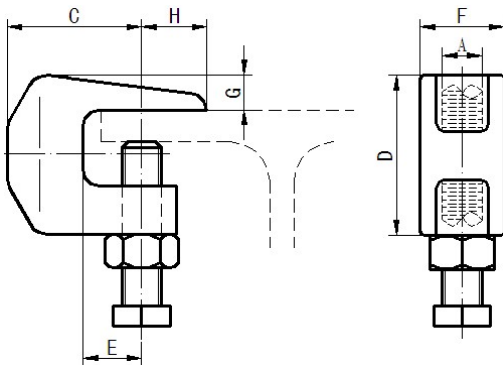


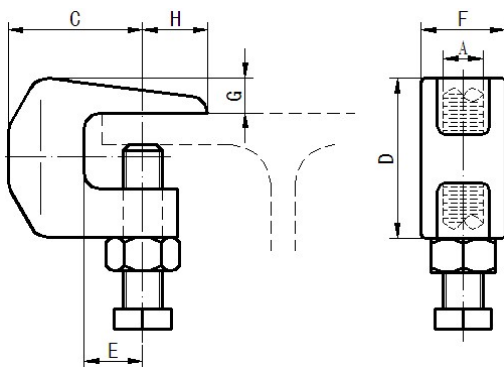
733 | 734 Beam-Clamp



- Size: 3/8" -1/2" (M10-M12).
- Material: Ductile iron or Forged steel
- Finish: Electro-Galvanized or Plain.
- Application: Be attached to horizontal flanges of structural members in either the top beam or bottom beam positions.



| Rod Size | A | C | D | E | F | G | H | Max Load | Approx. Wt. Ea. |
|----------|-------|-------|-------|-------|-------|-------|-------|----------|-----------------|
| In/mm | In/mm | In/mm | In/mm | In/mm | In/mm | In/mm | In/mm | Lbf/N | Lbs./kg |
| 3/8" | 1.34 | 1.57 | 0.55 | 0.83 | 0.35 | 0.67 | 2223 | 0.33 | |
| M10 | 34.0 | 40.0 | 14.0 | 21.0 | 9.0 | 17.0 | 500.0 | 0.15 | |
| 1/2" | 1.42 | 1.77 | 0.51 | 1.02 | 0.43 | 0.71 | 4223 | 0.53 | |
| M12 | 36.0 | 45.0 | 13.0 | 26.0 | 11.0 | 18.0 | 950.0 | 0.24 | |



| Rod Size | A | C | D | E | F | G | H | Max Load | Approx. Wt. Ea. |
|----------|-------|-------|-------|-------|-------|-------|-------|----------|-----------------|
| In/mm | In/mm | In/mm | In/mm | In/mm | In/mm | In/mm | In/mm | Lbf/N | Lbs./kg |
| 3/8" | 1.34 | 2.09 | 0.55 | 0.83 | 0.35 | 0.67 | 2223 | 0.33 | |
| M10 | 34.0 | 53.0 | 14.0 | 21.0 | 9.0 | 17.0 | 500.0 | 0.15 | |
| 1/2" | 1.42 | 2.28 | 0.51 | 1.02 | 0.43 | 0.71 | 4223 | 0.53 | |
| M12 | 36.0 | 58.0 | 13.0 | 26.0 | 11.0 | 18.0 | 950.0 | 0.24 | |