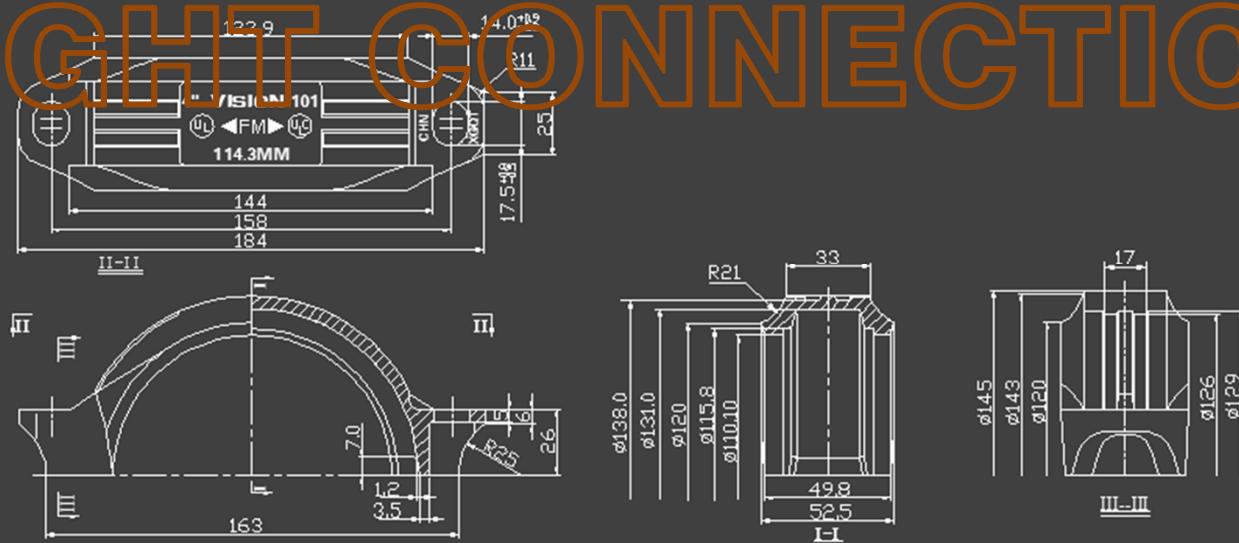


RIGHT CONNECTION





Shanghai VISION Mechanical Joint Ltd., Co.

Address: No.221 Jinlan Rd. Jiading Industry Park, Shanghai

Tel: 0086-21-5954-6863

Fax: 0086-21-5954-3888

Email: shv@visioninc.cn

Shanghai V-FAB Piping Ltd., Co.

Address: No.221 Jinlan Rd. Jiading Industry Park, Shanghai

TEL: 0086-21-5954-6863

FAX: 0086-21-5954-3888

Email: vfab@visioninc.cn



COMPANY

VISION was founded in 1999, are your one-stop resource for piping products and related piping products. With our unique offering of high quality and full range products , VISION leads the industry in piping solution innovation.

VISION is a first company design and produce grooved piping system in china with a innovative heritage. We've grown steadily over the past 15 years, focused first on Chinese market, then expanding into the Southeast Asia and Middle East Region. Today, VISION has the expertise, capabilities and resources to serve the piping industry throughout the world.

As a VISION customer, you can depend on VISION products for high-quality and performance at a competitive price. Also, you can expect our knowledgeable staff and authorized distributor partners to provide high-level technical consultations before, during and after the sale, so you receive the right piping products to meet your specific needs.

With industry-leading experts, multi-industry experience and dedicated research, we continually pioneer industrial piping technologies to meet the latest demands in the mining, oil field, offshore platform, chemical, power plant, steel plant, metro and tunnel, water and waster water, general industry and commercial building.

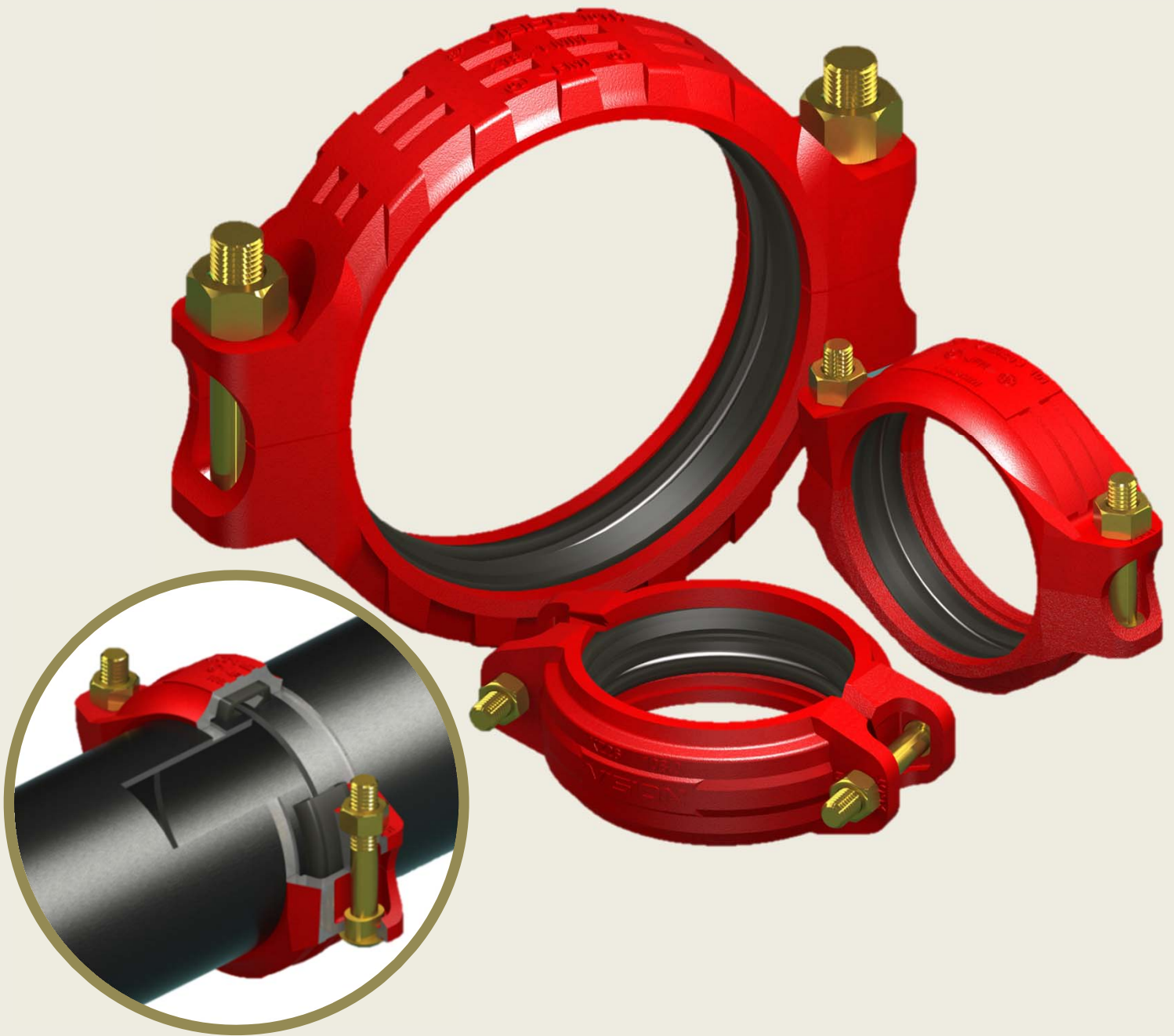
PRODUCTS

- GROOVED PIPING SYSTEM
- ULTRA GROOVED PIPING SYSTEM
- SHOULDERED PIPING SYSTEM
- PLAIN END PIPING SYSTEM
- COMPACT FLANGE
- CLAMP CONNECTOR
- BALL JOINT
- PIPE HNAGER
- PIPE PRE-FABRICATION
- MORE PRODUCTS

REFERENCE

- Fire protection system products refer to 《PRODUCTS LINE V4.0 | FIRE PROTECTION》
- Grooved piping system for fire protection refer to 《GROOVED PIPING SYSTEM | FIRE PROTECTION》
- Pipe hanger refer to 《PIPE HANGER & SUPPORT》
- Valves for fire protection refer to 《GENERAL VALVES | FIRE PROTECTION》

GROOVED PIPING SYSTEM



VISION
RIGHT CONNECTION

GROOVED PIPING SYSTEM

VISION



VISION | 001

RIGID COUPLINGS

MATERIAL OF PARTS

HOUSING: Ductile Iron
GASKET: EPDM,NBR,VITON,CR,SILICON
BOLT/NUT: Steel
FINISH: Paint, Orange or red, Special

APPROVAL: FM,UL,CE,TS
DATA SHEET: D-1002E

SPECIFICATION

SIZE: 25-300mm(1-12")
PRESSURE: 5.2MPa
GASKET TYPE: G01,G04



VISION | HR24

HEAVY DUTY RIGID COUPLINGS

MATERIAL OF PARTS

HOUSING: Ductile Iron
GASKET: EPDM,NBR,VITON,CR,SILICON
BOLT/NUT: Steel
FINISH: Paint, Orange or red, Special

DATA SHEET: D-1010E

SPECIFICATION

SIZE: 50-300mm(2-12")
PRESSURE: 6.9MPa(1000psi)
GASKET TYPE: G01N,G05



VISION | 101

FLEXIBLE COUPLINGS

MATERIAL OF PARTS

HOUSING: Ductile Iron
GASKET: EPDM,NBR,VITON,CR,SILICON
BOLT/NUT: Steel
FINISH: Paint, Orange or red, Special

APPROVAL: FM,UL,CE,TS
DATA SHEET: D-1003E

SPECIFICATION

SIZE: 25-300mm(1-12")
PRESSURE: 5.2MPa(750psi)
GASKET TYPE: G01,G04



VISION | 101H

HEAVY DUTY FLEXIBLE COUPLINGS

MATERIAL OF PARTS

HOUSING: Ductile Iron
GASKET: EPDM,NBR,VITON,CR,SILICON
BOLT/NUT: Steel
FINISH: Paint, Orange or red, Special

APPROVAL: FM,UL,CE,TS
DATA SHEET: D-1004E

SPECIFICATION

SIZE: 15-700mm(1/2-28")
PRESSURE: 10.35MPa(1500psi)
GASKET TYPE: G01,G04



VISION | S23

SNAP GROOVED COUPLINGS

MATERIAL OF PARTS

HOUSING: Ductile Iron
GASKET: EPDM,NBR,VITON,CR,SILICON
LINKAGE/PIN: Steel
SNAP: Steel
FINISH: Paint, Orange or red, Special

DATA SHEET: D-1009E

SPECIFICATION

SIZE: 40-200mm(1 1/2-8")
PRESSURE: 5.2MPa(750psi)
GASKET TYPE: G01



VISION | FITTINGS

GROOVED FITTINGS

MATERIAL OF PARTS

HOUSING: Ductile Iron
FINISH: Paint, Orange or red, Special

DATA SHEET: D-1024E to D-1031E

SPECIFICATION

SIZE: 25-1200mm(1-48")
PRESSURE: 6.9MPa(1000psi)
TYPE: ELBOW,TEE,CROSS,REDUCER,CAP,NIPPLE

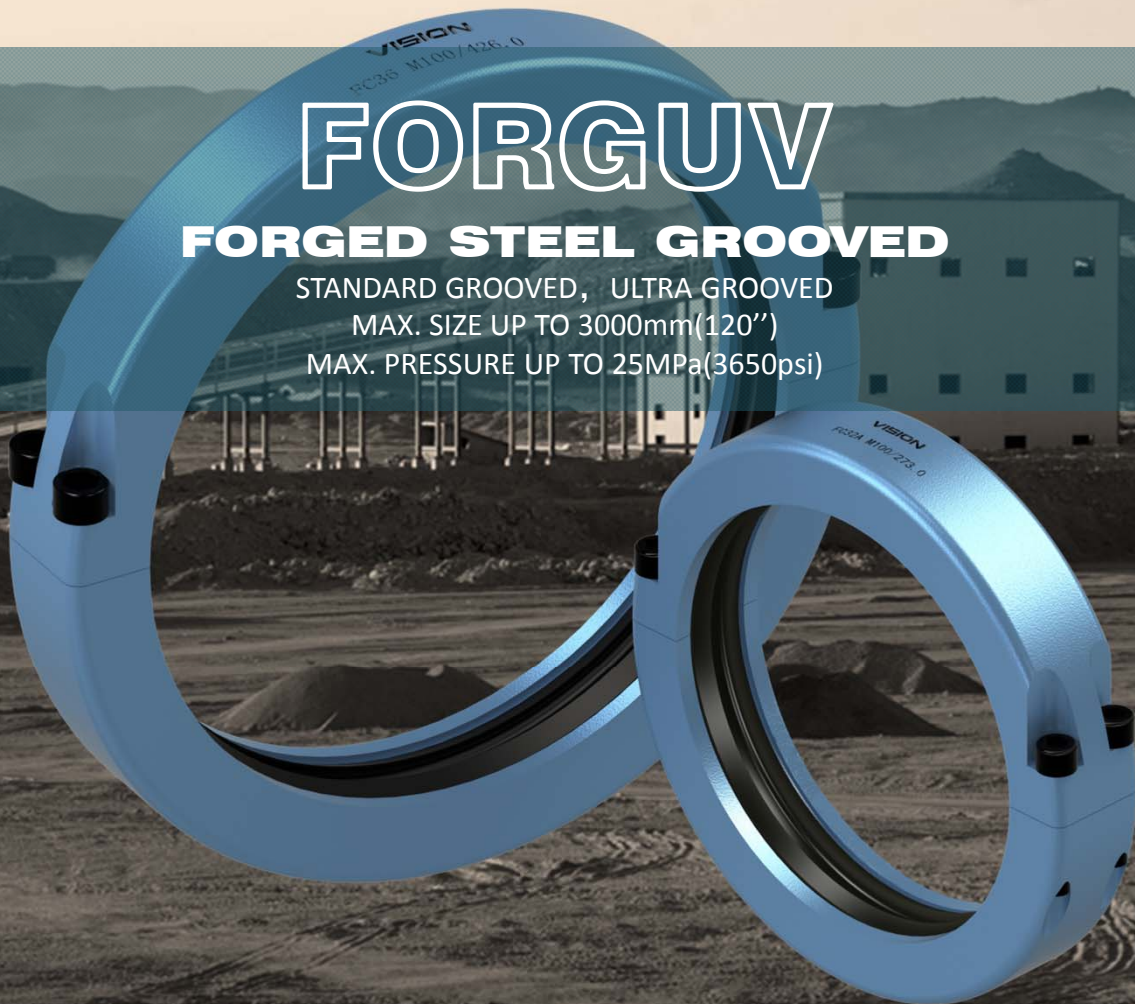
FORGUV

FORGED STEEL GROOVED

STANDARD GROOVED, ULTRA GROOVED

MAX. SIZE UP TO 3000mm(120")

MAX. PRESSURE UP TO 25MPa(3650psi)



FORGUV | FC32A

FORGED STEEL GROOVED COUPLINGS

MATERIAL OF PARTS

HOUSING: Forged Steel

GASKET: EPDM,NBR,CR,SILICON

BOLT: Steel

FINISH: Blackening, Special on request

DATA SHEET: D-1013E

SPECIFICATION

SIZE: 50-300mm(2-12")

PRESSURE: 10,16,25MPa(1500,2500,3650psi)

GASKET TYPE: G01,G01N,G05



VISION | FC36

FORGED STEEL ULTRA GROOVED COUPLINGS

MATERIAL OF PARTS

HOUSING: Forged Steel

GASKET: EPDM,NBR,CR,SILICON

BOLT: Steel

FINISH: Blackening, Special on request

DATA SHEET: D-1034E

SPECIFICATION

SIZE: 350-1200mm(14-48")

PRESSURE: 10,16,25MPa(1500,2500,3650psi)

GASKET TYPE: G08



VISION | FC38

LARGE SIZE FORGED STEEL GROOVED COUPLINGS

MATERIAL OF PARTS

HOUSING: Forged Steel

GASKET: EPDM,NBR,CR,SILICON

BOLT/PIN: Steel

FINISH: Blackening, Special on request

DATA SHEET: D-1266E

SPECIFICATION

SIZE: 1000-3000mm(40-120")

PRESSURE: 2.5,4.0,6.4,10.0MPa

GASKET TYPE: G08

Shanghai VISION Mechanical Joint Ltd., Co.

Address: No.221 Jinlan Rd. Jiading Industry Park, Shanghai

Tel: 0086-21-5954-6863

Fax: 0086-21-5954-3888

Email: shv@visioninc.cn

Shanghai V-FAB Piping Ltd., Co.

Address: No.221 Jinlan Rd. Jiading Industry Park, Shanghai

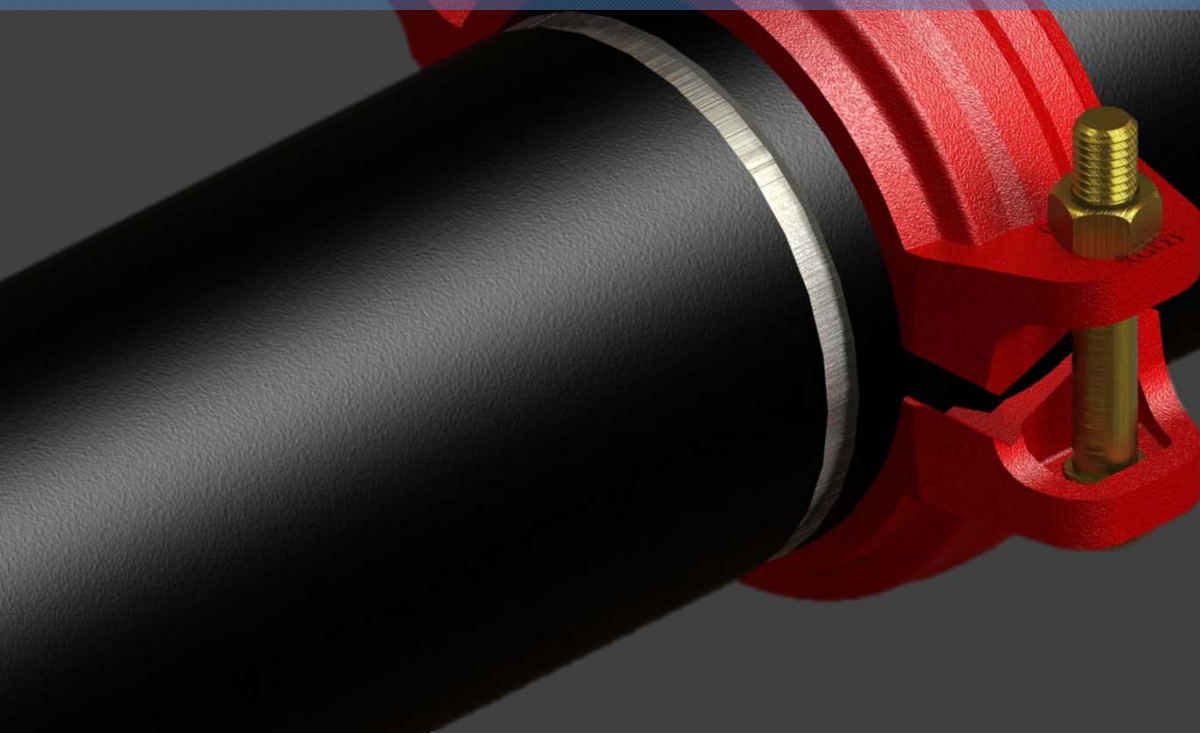
TEL: 0086-21-5954-6863

FAX: 0086-21-5954-3888

Email: vfab@visioninc.cn

QUICK INSTALLATION

NO NEED TO REMOVE BOLTS/NUTS AND GASKET, DIRECTLY PUSH ON TO END OF PIPE



VISION | KZ22

QUICK INSTALLATION RIGID COUPLINGS

MATERIAL OF PARTS

HOUSING: Ductile Iron
GASKET: EPDM,NBR,VITON,CR,SILICON
BOLT/NUT: Steel
FINISH: Paint, Orange or red, Special
DATA SHEET: D-1008E

SPECIFICATION

SIZE: 32-200mm(1¼-8")
PRESSURE: 5.2MPa(750psi)
GASKET TYPE: G06



VISION | KZ26

QUICK INSTALLATION FLEXIBLE COUPLINGS

MATERIAL OF PARTS

HOUSING: Ductile Iron
GASKET: EPDM,NBR,VITON,CR,SILICON
BOLT/NUT: Steel
FINISH: Paint, Orange or red, Special
DATA SHEET: D-1012E

SPECIFICATION

SIZE: 50-200mm(2-8")
PRESSURE: 6.9MPa(1000psi)
GASKET TYPE: G06

MORE

Please contact VISION for details

Shanghai VISION Mechanical Joint Ltd., Co.

Address: No.221 Jinlan Rd. Jiading Industry Park, Shanghai

Tel: 0086-21-5954-6863

Fax: 0086-21-5954-3888

Email: shv@visioninc.cn

Shanghai V-FAB Piping Ltd., Co.

Address: No.221 Jinlan Rd. Jiading Industry Park, Shanghai

TEL: 0086-21-5954-6863

FAX: 0086-21-5954-3888

Email: vfab@visioninc.cn

ULTRA GROOVED PIPING

ULTRA WIDE SEALING SURFACE, BETTER TIGHTNESS, GREATER BENDING MOMENT



VISION | UG28R

ULTRA GROOVED RIGID COUPLINGS

MATERIAL OF PARTS

HOUSING: Ductile Iron
GASKET: EPDM,NBR,CR,SILICON
BOLT/NUT: Steel
FINISH: Paint, Orange or red, Special
DATA SHEET: D-1033E

SPECIFICATION

SIZE: 350-1200mm(14-48")
PRESSURE: 2.5MPa(365psi)
GASKET TYPE: G08



VISION | UG28

ULTRA GROOVED FLEXIBLE COUPLINGS

MATERIAL OF PARTS

HOUSING: Ductile Iron
GASKET: EPDM,NBR,CR,SILICON
BOLT/NUT: Steel
FINISH: Paint, Orange or red, Special
DATA SHEET: D-1032E

SPECIFICATION

SIZE: 350-1200mm(14-48")
PRESSURE: 2.5MPa(365psi)
GASKET TYPE: G08



VISION | FITTINGS

ULTRA GROOVED FITTINGS

MATERIAL OF PARTS

HOUSING: Ductile Iron or Steel
FINISH: Paint, Orange or red, Special
DATA SHEET: D-1035E,D-1036E

SPECIFICATION

SIZE: 350-1200mm(14-48")
PRESSURE: 2.5MPa(365psi)
TYPE: ELBOW,TEE,CROSS,REDUCER,CAP,NIPPLE

Shanghai VISION Mechanical Joint Ltd., Co.

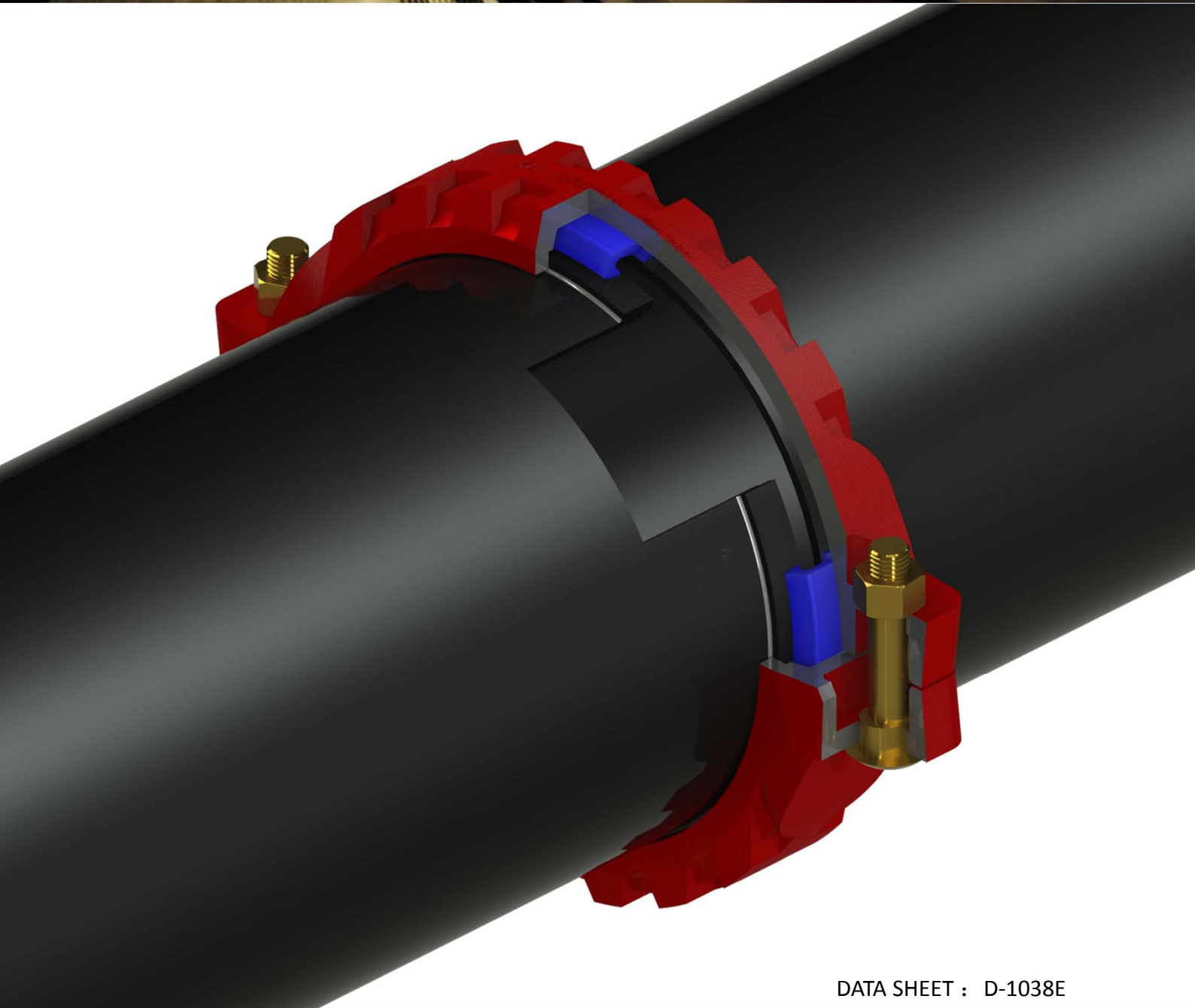
Address: No.221 Jinlan Rd. Jiading Industry Park, Shanghai
Tel: 0086-21-5954-6863
Fax: 0086-21-5954-3888
Email: shv@visioninc.cn

Shanghai V-FAB Piping Ltd., Co.

Address: No.221 Jinlan Rd. Jiading Industry Park, Shanghai
TEL: 0086-21-5954-6863
FAX: 0086-21-5954-3888
Email: vfab@visioninc.cn



SHOULDERED COUPLINGS



DATA SHEET : D-1038E

VISION
RIGHT CONNECTION

PIPE HANGER

CLEVIS HANGER

15-600mm($\frac{1}{2}$ "-24")



DATA SHEET : D-1040E

VISION
RIGHT CONNECTION

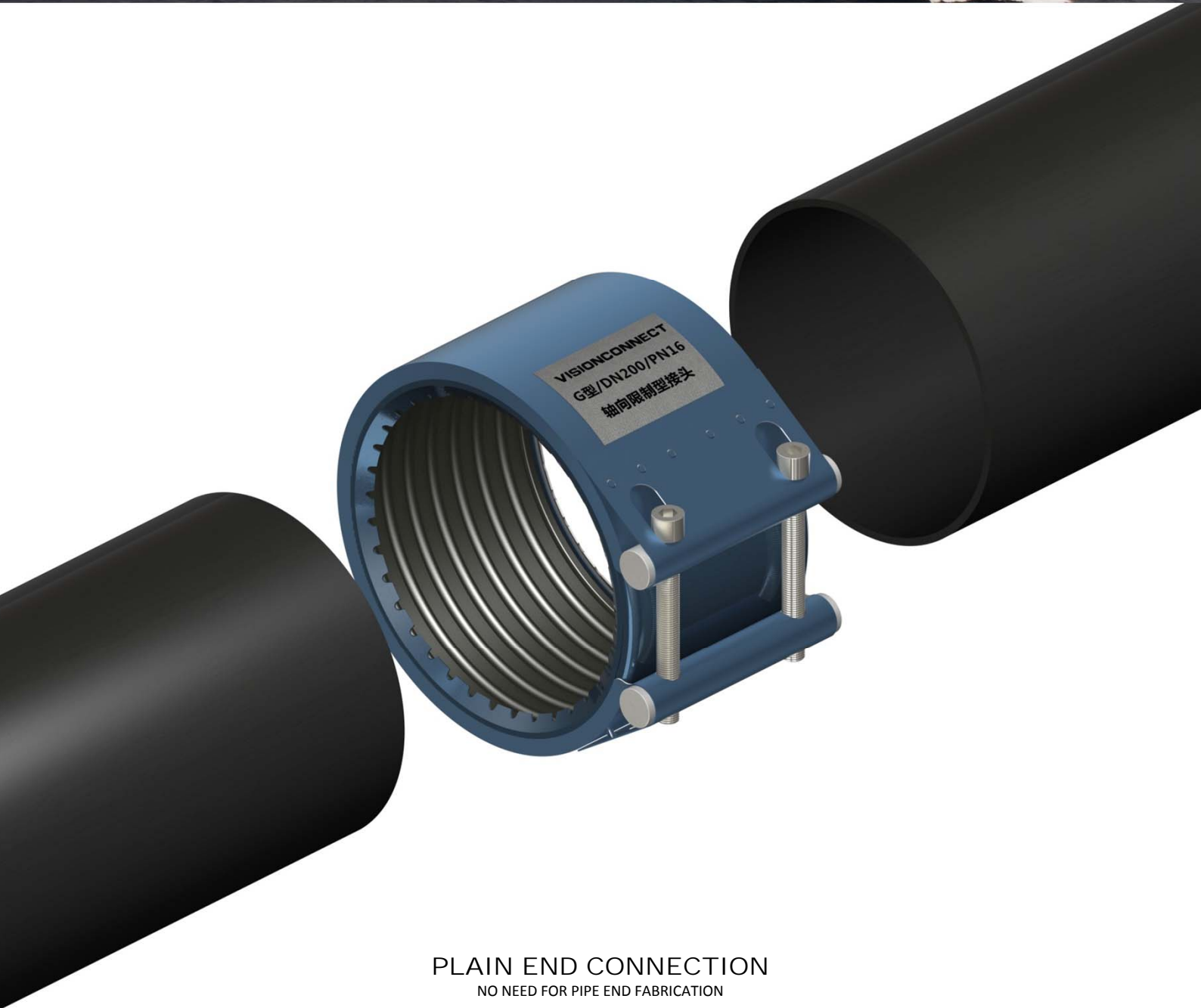
VISIONCONNECT

MECHANICAL JOINT

MAX. SIZE UP TO 2000mm

MAX. SHIP PRESSURE UP TO 1.6MPa(232PSI)

MAX. INDUSTRY PRESSURE UP TO 3.2MPa(465PSI)



PLAIN END CONNECTION

NO NEED FOR PIPE END FABRICATION

VISION
RIGHT CONNECTION

PLAIN END MECHANICAL JOINT

VISION



VISIONCONNECT | G

AXIAL RESTRICT JOINT

MATERIAL OF PARTS

HOUSING: S.S. 304/316
LINE PLATE: S.S. 304/316
BOLT: S.S. 304/316
ROD: S.S. 304/316
GASKET: EPDM,NBR,VITON,SILICON
DATA SHEET: D-1232E

SPECIFICATION

SIZE: 15-350mm(½-14")
SHIP PRESSURE: 1.6MPa(232psi)
INDUSTRY PRESSURE: 3.2MPa(465psi)
Standard or Extension Length



VISIONCONNECT | F

FLEXIBLE JOINT

MATERIAL OF PARTS

HOUSING: S.S. 304/316
LINE PLATE: S.S. 304/316
BOLT: S.S. 304/316
ROD: S.S. 304/316
GASKET: EPDM,NBR,VITON,SILICON
DATA SHEET: D-1233E

SPECIFICATION

SIZE: 15-2000mm(½-80")
SHIP PRESSURE: 1.6MPa(232psi)
INDUSTRY PRESSURE: 3.2MPa(465psi)
Standard or Extension Length



VISIONCONNECT | GF

COMBINATION JOINT

MATERIAL OF PARTS

HOUSING: S.S. 304/316
LINE PLATE: S.S. 304/316
BOLT: S.S. 304/316
ROD: S.S. 304/316
GASKET: EPDM,NBR,VITON,SILICON
DATA SHEET: D-1234E

SPECIFICATION

SIZE: 15-350mm(½-14")
SHIP PRESSURE: 1.6MPa(232psi)
INDUSTRY PRESSURE: 3.2MPa(465psi)
Standard or Extension Length



VISIONCONNECT | R

REPAIR JOINT

MATERIAL OF PARTS

HOUSING: S.S. 304/316
LINE PLATE: S.S. 304/316
BOLT: S.S. 304/316
ROD: S.S. 304/316
GASKET: EPDM,NBR,VITON,SILICON
DATA SHEET: D-1235E

SPECIFICATION

SIZE: 20-2000mm(¾-80")
SHIP PRESSURE: 1.6MPa(232psi)
INDUSTRY PRESSURE: 3.2MPa(465psi)
Standard or Extension Length

MORE

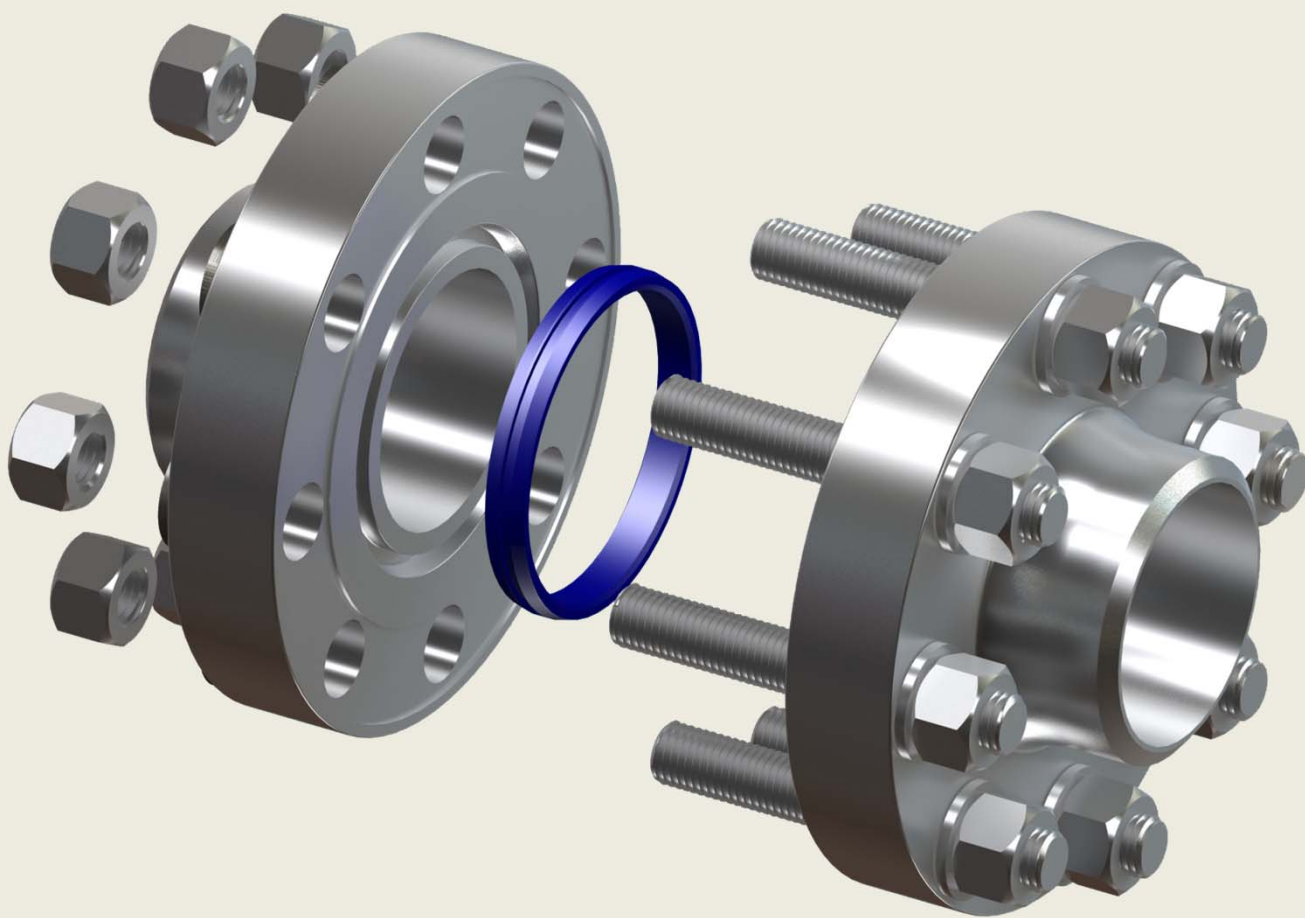
Please contact VISION for details

VCF

COMPACT FLANGE

MAX. SIZE UP TO 600mm(24")

MAX. PRESSURE UP TO 42MPa(CL2500)



METAL SEALING
COMPACT CONSTRUCTION

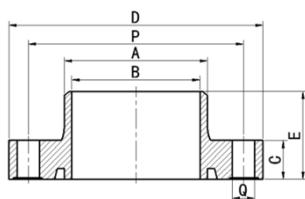
NORSOK L-005

SMALL SIZE、LIGHT WEIGHT
SUPERIOR TIGHTNESS

VISION
RIGHT CONNECTION

COMPACT FLANGE

VISION



VCF | BU

BUTTED COMPACT FLANGE

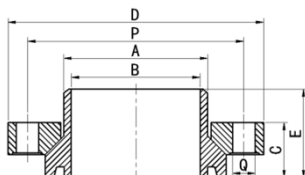
MATERIAL OF PARTS

FLANGE: Alloy Steel
BOLT/NUT: Alloy Steel
GASKT: S.S. 304/316, Special
GASKET COATING: PTFE
FINISH: Plain

DATA SHEET: D-1236E

SPECIFICATION

SIZE: 15-600mm($\frac{1}{2}$ -24")
PRESSURE RATE:
ASME: CL150, 300, 600, 900, 1500, 2500
API: 5K, 7.5K, 10K, 15K PSI
GB: PN16, 25, 40, 63, 100, 160, 260, 420



VCF | LS

LOOSE COMPACT FLANGE

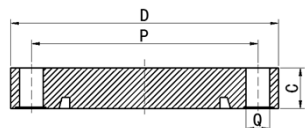
MATERIAL OF PARTS

FLANGE: Alloy Steel
BOLT/NUT: Alloy Steel
GASKT: S.S. 304/316, Special
GASKET COATING: PTFE
FINISH: Plain

DATA SHEET: D-1237E

SPECIFICATION

SIZE: 15-600mm($\frac{1}{2}$ -24")
PRESSURE RATE:
ASME: CL150, 300, 600, 900, 1500, 2500
API: 5K, 7.5K, 10K, 15K PSI
GB: PN16, 25, 40, 63, 100, 160, 260, 420



VCF | BL

BLIND COMPACT FLANGE

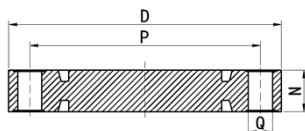
MATERIAL OF PARTS

FLANGE: Alloy Steel
BOLT/NUT: Alloy Steel
GASKT: S.S. 304/316, Special
GASKET COATING: PTFE
FINISH: Plain

DATA SHEET: D-1238E

SPECIFICATION

SIZE: 15-600mm($\frac{1}{2}$ -24")
PRESSURE RATE:
ASME: CL150, 300, 600, 900, 1500, 2500
API: 5K, 7.5K, 10K, 15K PSI
GB: PN16, 25, 40, 63, 100, 160, 260, 420



VCF | PB

PADDLE BLANK

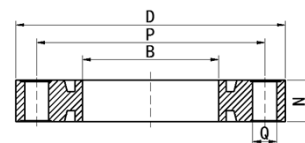
MATERIAL OF PARTS

FLANGE: Alloy Steel
BOLT/NUT: Alloy Steel
GASKT: S.S. 304/316, Special
GASKET COATING: PTFE
FINISH: Plain

DATA SHEET: D-1239E

SPECIFICATION

SIZE: 15-600mm($\frac{1}{2}$ -24")
PRESSURE RATE:
ASME: CL150, 300, 600, 900, 1500, 2500
API: 5K, 7.5K, 10K, 15K PSI
GB: PN16, 25, 40, 63, 100, 160, 260, 420



VCF | PS

PADDLE SPACER

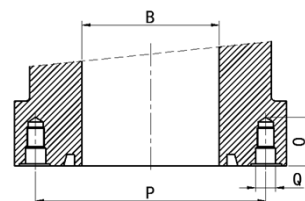
MATERIAL OF PARTS

FLANGE: Alloy Steel
BOLT/NUT: Alloy Steel
GASKT: S.S. 304/316, Special
GASKET COATING: PTFE
FINISH: Plain

DATA SHEET: D-1240E

SPECIFICATION

SIZE: 15-600mm($\frac{1}{2}$ -24")
PRESSURE RATE:
ASME: CL150, 300, 600, 900, 1500, 2500
API: 5K, 7.5K, 10K, 15K PSI
GB: PN16, 25, 40, 63, 100, 160, 260, 420



VCF | RI

RIGID INTERFACE

MATERIAL OF PARTS

FLANGE: Alloy Steel
BOLT/NUT: Alloy Steel
GASKT: S.S. 304/316, Special
GASKET COATING: PTFE
FINISH: Plain

DATA SHEET: D-1241E

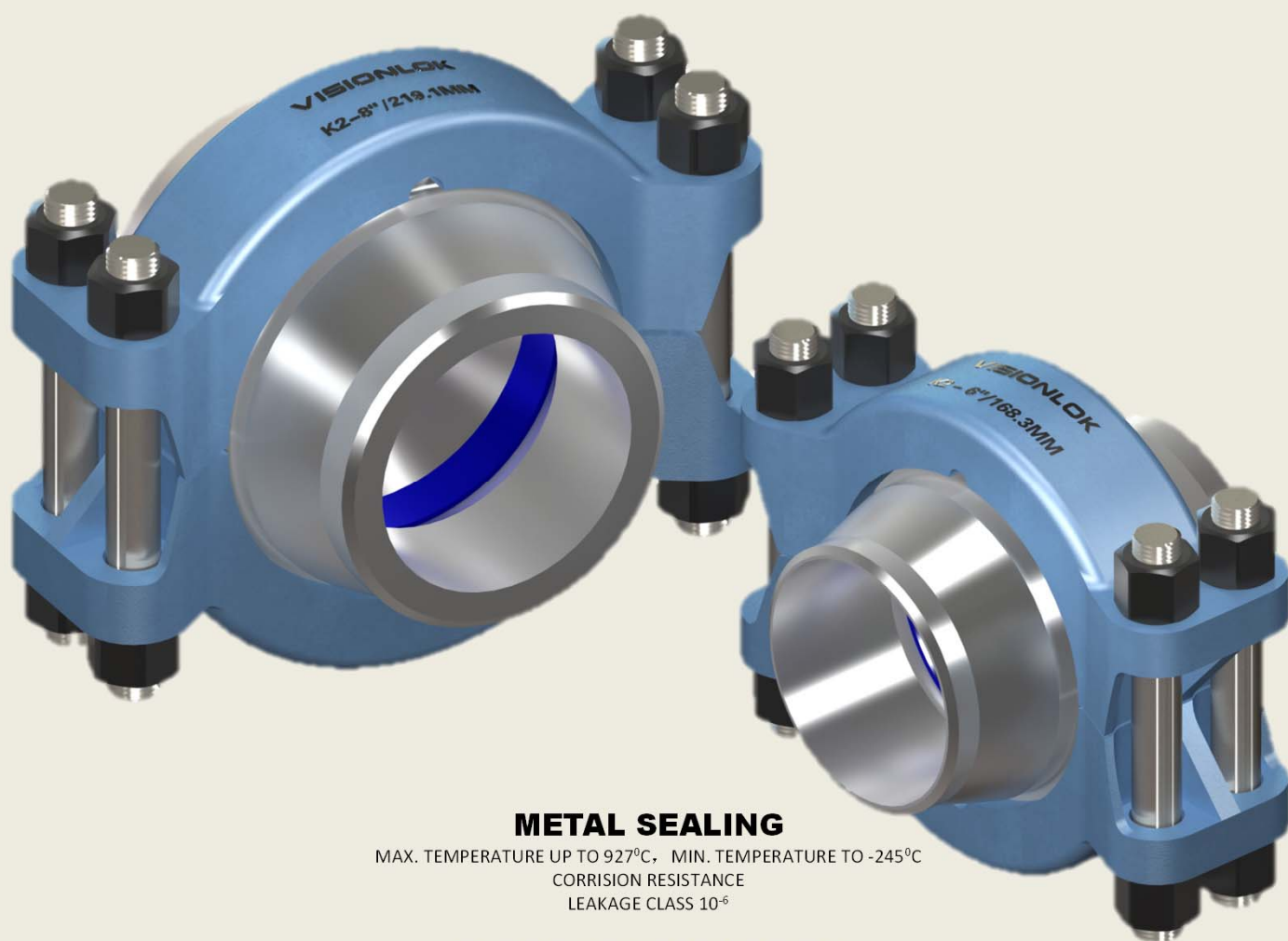
SPECIFICATION

SIZE: 15-600mm($\frac{1}{2}$ -24")
PRESSURE RATE:
ASME: CL150, 300, 600, 900, 1500, 2500
API: 5K, 7.5K, 10K, 15K PSI
GB: PN16, 25, 40, 63, 100, 160, 260, 420

VISIONLOK

CLAMP CONNECTOR

MAX. SIZE UP TO 600mm(24")
MAX. PRESSURE UP TO 420MPa(60000psi)



METAL SEALING

MAX. TEMPERATURE UP TO 927°C, MIN. TEMPERATURE TO -245°C
CORROSION RESISTANCE
LEAKAGE CLASS 10⁻⁶

CLAMP CONSTRUCTION

SMALL SIZE、LIGHT WEIGHT
VIBRATION RESISTANCE
INSTALLATION EASILY, MAINTENANCE SIMPLY

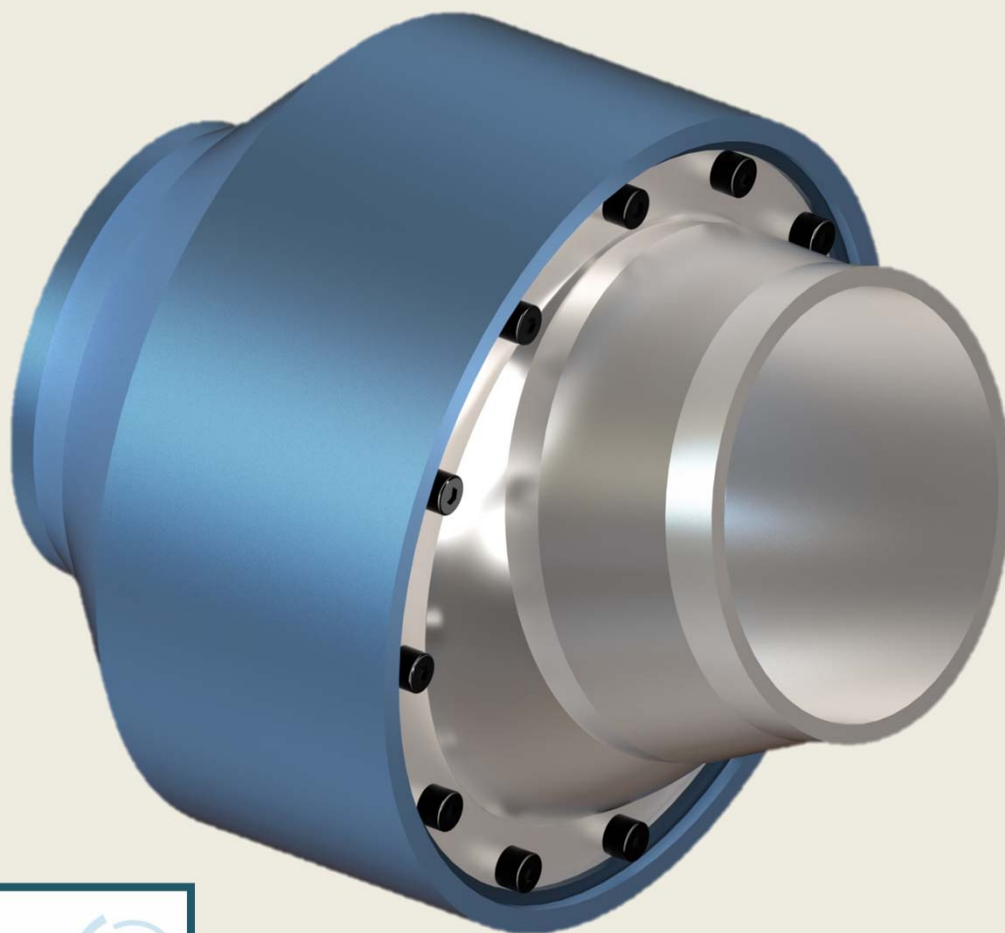
DATA SHEET
D-1247E

VISION
RIGHT CONNECTION

VISIONFLEX

BALL JOINT

COMING SOON



FLEXIBLE GRAPHITE GASKET
HIGH TEMPERATURE RESISTANCE, WAERING RESISTANCE

BALL TYPE DESIGN
ANGLE DEFLECTION、ROTATION
SIZE 50-300mm, PRESSURE UP TO 25MPa

DATA SHEET
D-1242E

VISION
RIGHT CONNECTION

MORE PRODUCTS

VISION



SP37

EXTRA PRESSURE CONNECTOR

MATERIAL OF PARTS

HOUSING: Carbon Steel
RING: Carbon Steel
GASKET: EPDM,NBR,VITON
BOLT: Steel
FINISH: Blackening,Galvanize,Special

DATA SHEET: D-1245E

SPECIFICATION

SIZE: 15-100mm(½-4")
PRESSURE: 25MPa(3650psi)



SF31

WELD-FREE FLANGE FOR D.I. PIPE

MATERIAL OF PARTS

FLANGE: Ductile Iron
JOINT: Ductile Iron
GASKET: EPDM,NBR,SILICON
BOLT/NUT: Steel
FINISH: Paint, Special on request

DATA SHEET: D-1246E

SPECIFICATION

SIZE: 100-800mm(4-32")
PRESSURE: 1.6MPa(250psi)



260

FLEXIBLE PIPE CONNECTOR

MATERIAL OF PARTS

HOUSING: Ductile Iron,Steel
RING: Steel
GASKET: EPDM,NBR,VITON,CR,SILICON
BOLT/NUT: Steel
FINISH: Paint, Special on request

DATA SHEET: D-1244E

SPECIFICATION

SIZE: 250-700mm(10-28")
PRESSURE: 1.6MPa(2500psi)



DSC

RIGID PIPE CONNECTOR

MATERIAL OF PARTS

HUB: Alloy Steel
SLEEVE: Alloy Steel
RING: Alloy Steel
GASKET: EPDM,NBR,VITON
FINISH: Blackening,Special

DATA SHEET: D-1243E

SPECIFICATION

SIZE: 80-400mm(3-16")
PRESSURE: 40MPa(5800psi)



DG33

DOUBLE GROOVED COUPLINGS

MATERIAL OF PARTS

HOUSING: Ductile Iron
GASKET: EPDM,NBR
BOLT/NUT: Steel
FINISH: Paint, Special on request

DATA SHEET: D-1014E

SPECIFICATION

SIZE: 80-400mm(3-16")
PRESSURE: 28MPa(4000psi) Max.



201

HDPE COUPLINGS

MATERIAL OF PARTS

HOUSING: Ductile Iron
GASKET: EPDM,NBR,SILICON
BOLT/NUT: Steel
FINISH: Paint,Special on request

DATA SHEET: D-1037E

SPECIFICATION

SIZE: 50-400mm(2-16")
PRESSURE: 4.0MPa(580psi)

PIPE FABRICATION

PIPE PRE-FABRICATION

IMPROVE THE QUALITY, SHORTEN THE WORK PERIOD, REDUCE THE TOTAL COST
GOING GREEN AND ENVIRONMENTAL PROTECTION

V-FAB

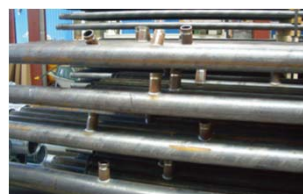
With many years experiences and rigorous quality control, we can offer total pipe pre-fabrication service to our customer, as engineering products and service, we are the pioneers of this industry, you can depend on us to complete your project.

Pipe fabrication is our major work, it is not OEM service! We worked on pipe fabrication so many years and continuously accumulate experience. Our enterprise standard developed according to national design code and standard is result from our many years experience and protection the quality.

We are the efficient and economic service provider, When you compare the cost between yourself and us, you will find our cost is more competitive. Our cost free and paid service will reduce your cost and improve your competitiveness.

SERVICE

- Project Plan
- Specification
- On site Measuring
- 2D and 3D drawing service
- Clash detection
- Pipe pre-fabrication
- Installation Supervision



Shanghai VISION Mechanical Joint Ltd., Co.

Address: No.221 Jinlan Rd. Jiading Industry Park, Shanghai

Tel: 0086-21-5954-6863

Fax: 0086-21-5954-3888

Email: shv@visioninc.cn

Shanghai V-FAB Piping Ltd., Co.

Address: No.221 Jinlan Rd. Jiading Industry Park, Shanghai

TEL: 0086-21-5954-6863

FAX: 0086-21-5954-3888

Email: vfab@visioninc.cn

INDUSTRIES

VISION



MINING

No matter mine is underground or strip, no matter mine is coal or metal mine, no matter whether it transfers water or slurry, no matter how high or low pressure is, it must ensure the production continuously, that need reliable piping products, VISION is your ideal option, Leakage-Free, Installation-Easily, maintenance-Simply, Reduce your operating cost.

APPLICATION

- BACKFILL SYSTEM
- WATER SUPPLY SYSTEM
- FIRE PROTECTION SYSTEM
- COMPRESSED AIR SYSTEM
- UNDERGROUND DRAINAGE SYSTEM
- TAILING SYSTEM



OIL FIELD

From wellhead to crude oil pipeline, from water injection to all kind of auxiliary pipeline, pipe connection is the key point that owner and designer must be considered. With many years experience for this industry and knowledge, VISION offer you professional technical service and total solution, ensure piping system running reliably, installation simply, reducing downtime and operating cost.

APPLICATION

- WATER INJECTION SYSTEM
- SLURRY PIPELINE
- PRODUCED WATER SYSTEM
- WATER TREATMENT SYSTEM
- CRUDE OIL PIPELINE
- FIRE PROTECTION SYSTEM



OFFSHORE PLATFORM

There have higher specification for pipe connection due to extreme environment and special requirement, With many years experience for this industry and knowledge, VISION offer you professional technical service and total solution, ensure piping system running reliably, installation simply, reducing downtime and operating cost.

APPLICATION

- WATER INJECTION SYSTEM
- DECK DRAINAGE SYSTEM
- CEMENT & SLURRY PIPELINE
- AIR COMPRESSED AIR SYSTEM
- CRUDE OIL PIPELINE
- FIRE PROTECTION SYSTEM



REFINERY & CHEMICAL

From storage and transportation to downstream chemical, all piping systems are the key of this type of process industry, that need high requirements for pipe connection due to high pressure and temperature. With many years experience for this industry and knowledge, VISION offer you professional technical service and total solution, ensure piping system running reliably, installation simply, reducing downtime and operating cost.

APPLICATION

- PROCESS PIPELINE
- COOLING WATER SYSTEM
- COMPRESSED AIR SYSTEM
- WATER TREATMENT SYSTEM
- FIRE PROTECTION SYSTEM



POWER PLANT

No matter how high or low pressure is, no matter whether it transfers, no matter what type of pipe laying, there have higher requirements for pipe connection due to high pressure and temperature, With many years experience for this industry and knowledge, VISION offer you professional technical service and total solution, ensure piping system running reliably, installation simply, reducing downtime and operating cost.

APPLICATION

- COAL FEEDING PIPELINE
- COOLING WATER SYSTEM
- FEED WATER SYSTEM
- WATER TREATMENT SYSTEM
- STEAM SYSTEM
- FIRE PROTECTION SYSTEM
- LUBRICATING OIL SYSTEM
- VACUUM SYSTEM



STEEL PLANT

Steel plant is the typical heavy duty industry, from material transportation, steelmaking, to continuous casting, all the process have many piping system, such as cooling water, compressed air, lubricating oil and hydraulic piping. How to reduce downtime and maintenance is the key point to be considered, VISION full range piping products and solution is your ideal option.

APPLICATION

- DESCALING SYSTEM
- COOLING WATER SYSTEM
- WATER TREATMENT SYSTEM
- COMPRESSED AIR SYSTEM
- LUBRICATING OIL SYSTEM
- HYDRAULIC SYSTEM

INDUSTRIES

VISION



METRO & TUNNEL

From construction to operation, no matter what type of medium in pipe system, no matter how the pressure is, VISION can offer you reliable and simple piping system. In past few years, VISION has offered many shouldered couplings and fittings into muddy system for many projects.

APPLICATION

- MUDDY PIPE SYSTEM
- WATER SUPPLY SYSTEM
- COMPRESSED AIR SYSTEM
- FIRE PROTECTION SYSTEM



WATER & WASTER WATER

Whether it is water plant or waster water plant, whether it is rainwater pump station or valve well, whether it is municipal pipe net or reservoir. VISION can offer your optimized solution, especially for large and extra large size pipe, such as the connection of facility or equipment, ensure operating safety, maintenance simply.

APPLICATION

- PUMP STATION
- MUNICIPAL PIPE NET
- SLURRY PIPELINE
- BURIED PIPELINE



AUTOMOBILE INDUSTRY

Press,painting,assembly and testing workshop have many pipe system, no matter what the medium is, With many years experience for this industry and knowledge, VISION offer you professional technical service and total solution, ensure piping system running reliably, installation simply, reducing downtime and operating cost.

APPLICATION

- COOLING WATER SYSTEM
- COMPRESSED AIR SYSTEM
- WATER TREATMENT SYSTEM
- E-COATING
- LUBRICATING OIL SYSTEM
- FUEL SYSTEM
- FIRE PROTECTION SYSTEM



GENERAL INDUSTRY

General industry include machining and assembly, production of food and medicine, electronic and electrical products, commodity. With many years experience for this industry and knowledge, VISION offer you professional technical service and total solution, ensure piping system running reliably, installation simply, reducing downtime and operating cost.

APPLICATION

- COOLING WATER SYSTEM
- CHILLED WATER SYSTEM
- HEATING SYSTEM
- WATER SUPPLY SYSTEM
- COMPRESSED AIR SYSTEM
- PROCESS GAS PIPELINE
- FIRE PROTECTION SYSTEM



COMMERCIAL BUILDING

We served commercial buildings more than 15 years, we offer grooved couplings and fittings ,not only fire protection system, also HVAC and plumbing system. We have rich experience and high quality products, and offer you full service and total solution.

APPLICATION

- COOLING WATER SYSTEM
- CHILLED WATER SYSTEM
- HEATING SYSTEM
- WATER SUPPLY SYSTEM
- FIRE PROTECTION SYSTEM

MORE INDUSTRIES

Please contact VISION for details.

SYSTEM SOLUTION

VISION



MINING | BACKFILL SYSTEM

Backfill system with slurry inside have pressure up to 20MPa and pressure surge, and peak pressure may up to 30MPa, that also need installation and disassembly quick and simple. FC32A forged steel grooved coupling is special designed by VISION for this piping system, and it is ideal option.

RECOMMEND PRODUCTS

- FC32A FORGED STEEL GROOVED COUPLINGS
- 101H FLEXIBLE GROOVED COUPLINGS
- PIPE PRE-FABRICATION



SHIELD TBM | MUDDY WATER SYSTEM

Muddy water system is very important link in shield TBM, it is extremely important to how to realize quick connection and wear-resisting, VISION T29 shouldered coupling is ideal option, leakage free, installation easily, reducing downtime saving and maintenance simply.

RECOMMEND PRODUCTS

- T29 SHOULDERED COUPLINGS
- 101H FLEXIBLE GROOVED COUPLINGS
- PIPE PRE-FABRICATION



POWER PLANT | COAL FEEDING SYSTEM

Coal fired power plant have large size pipe line for coal feeding that have high temperature and will cause axial movement, it need a suitable piping solution. VISION 260 shouldered flexible connector is the ideal option, compensating axial movement, relieving vibration, withstanding high temperature, installation easily and maintenance simply.

RECOMMEND PRODUCTS

- 260 FLEXIBLE PIPE CONNECTOR
- 101H FLEXIBLE GROOVED COUPLINGS
- 703 CLEVIS PIPE HANGER
- PIPE PRE-FABRICATION



OIL FIELD | WATER INJECTION SYSTEM

No matter it is oil field or offshore platform, no matter what the pressure is, VISION can offer water injection system total solution, leakage free, installation easily, space saving and maintenance simply.

RECOMMEND PRODUCTS

- FC32A FORGED STEEL GROOVED COUPLINGS
- 101H FLEXIBLE GROOVED COUPLINGS
- HR24 RIGID GROOVED COUPLINGS
- VISIONFLEX BALL JOINT
- PIPE PRE-FABRICATION



STEEL PLANT | DESCALING SYSTEM

Descaling system remove oxide skin on metal surface using extra high pressure water, it is widely use for steel plant. VISION clamp connector is the optimized solution for this pipe system, leakage free, installation easily, space saving and maintenance simply.

RECOMMEND PRODUCTS

- VISIONLOK CLAMP CONNECTORS
- VCF COMPACT FLANGES
- FC32A FORGED STEEL GROOVED COUPLINGS
- VISIONFLEX BALL JOINT
- PIPE PRE-FABRICATION



MINING | UNDERGROUND DRAINAGE

No matter it is inclined or vertical shaft, no matter it is roadway or shaft, no matter how the pressure is, VISION can offer you total piping solution for drainage system, leakage free, installation simply, reducing downtime.

RECOMMEND PRODUCTS

- 101H FLEXIBLE GROOVED COUPLINGS
- FC32A FORGED STEEL GROOVED COUPLINGS
- FC36A FORGED STEEL UGS COUPLING
- PIPE PRE-FABRICATION

SYSTEM SOLUTION

VISION



TAILING PIPELINE

Tailing pipeline usually transfer by hydraulic, it is key point to prevent wearing, also need sufficient axial compensation, VISION piping solution will be the ideal option.

RECOMMEND PRODUCTS

- T29 SHOULDERED COUPLINGS
- 101H FLEXIBLE GROOVED COUPLINGS
- PIPE PRE-FABRICATION



LONG DISTANCE WATER FEED PIPELINE

Long distance water feeding pipeline normally used for municipal and industrial field or faraway area, that need installation easily, grooved piping system will be the ideal option and weldless.

RECOMMEND PRODUCTS

- UG28 FLEXIBLE GROOVED COUPLINGS
- 101H FLEXIBLE GROOVED COUPLINGS
- T29 SHOULDERED COUPLINGS
- VISIONCONNECT MECHANICAL JOINT
- PIPE PRE-FABRICATION



BURIED PIPELINE

The major issue of buried pipeline is differential settlement, it must be considered how to connect and compensate this differential settlement, VISION can offer you total solution, leakage free, installation easily, reducing downtime and total installation cost.

RECOMMEND PRODUCTS

- UG28 FLEXIBLE GROOVED COUPLINGS
- 101H FLEXIBLE GROOVED COUPLINGS
- T29 SHOULDERED COUPLINGS
- VISIONCONNECT MECHANICAL JOINT
- PIPE PRE-FABRICATION



COOLING WATER SYSTEM

No matter it is HVAC cooling system or industrial circulation cooling system, no matter how much the pressure is, VISION can offer you total solution, leakage free, installation easily, and going green and environmental protection.

RECOMMEND PRODUCTS

- UG28 FLEXIBLE GROOVED COUPLINGS
- 101H FLEXIBLE GROOVED COUPLINGS
- VISIONCONNECT MECHANICAL JOINT
- 703 CLEVIS HANGERS
- PIPE PRE-FABRICATION



CHILLED WATER SYSTEM

It is the point that the system running in low temperature for long time and low and high temperature alternation, that will cause pipeline to expand and contract, it is very important how to compensate axial movement. VISION can offer you total solution, leakage free, installation easily, and reducing downtime.

RECOMMEND PRODUCTS

- UG28 FLEXIBLE GROOVED COUPLINGS
- 101H FLEXIBLE GROOVED COUPLINGS
- 101 FLEXIBLE GROOVED COUPLINGS
- 703 CLEVIS HANGERS
- PIPE PRE-FABRICATION



FIRE PROTECTION SYSTEM

Since 1999, VISION has offered more than 10 millions grooved couplings and fittings for fire protection system, and have rich experience. From 2012, we started to distribute Reliable sprinkler equipments, Solberg foam system, SIEX gaseous system and Protectowire LHD etc., and offer our customers total solution of fire protection system.

RECOMMEND PRODUCTS

- 001 RIGID COUPLINGS
- 101 FLEXIBLE COUPLINGS
- PIPE HANGERS
- GENERAL VALVES
- Refer to 《PRODUCTS LINE V4.0》

EQUIPMENT APPLICATION

VISION



AIR COMPRESSOR

No matter it is fixed or mobile unit, no matter it is screw or centrifugal type, VISION can offer you total piping solution include pipe pre-fabrication and pipe couplings, relieving vibration, withstanding aging from high temperature and oil, ensure unit operation reliably, leakage free and maintenance simply.

RECOMMEND PRODUCTS

- 101 FLEXIBLE COUPLINGS
- 101H FLEXIBLE COUPLINGS
- PIPE PRE-FABRICATION



RO DEVICE

RO device widely used for water treatment system, raw water side normally use flexible grooved coupling to connect to water supply system to compensate deviation of assembly and operation, also meet the requirement for high pressure, VISION grooved coupling is the ideal option.

RECOMMEND PRODUCTS

- 101H FLEXIBLE COUPLINGS
- 6101H S.S. FLEXIBLE COUPLINGS
- PIPE PRE-FABRICATION



HYDRAULIC STATION

Hydraulic station widely used in heavy duty industry and water conservancy industry, VISION offer total piping solution for hydraulic and cooling pipeline, leakage free, installation easily, maintenance simply ,spacer saving. VISIONLOK Clamp connector is ideal option for hydraulic pipeline, and grooved coupling is ideal option for cooling pipeline, also we can offer pipe pre-fabrication service.

RECOMMEND PRODUCTS

- VISIONLOK CLAMP CONNECTOR
- VCF COMPACT FLANGE
- 101 FLEXIBLE COUPLINGS
- 101H FLEXIBLE COUPLINGS
- PIPE PRE-FABRICATION



CONSTRUCTION MACHINERY

Cement pump truck widely used for construction industry, the cement from outlet of pump through pipe and transfer to jobsite, each truck have some shouldered end pipes. VISION KT quick installation shouldered coupling let assembly and site installation more easier, wearing-resistance gasket ensure longer using life.

RECOMMEND PRODUCTS

- KT SHOULDERED COUPLINGS
- PIPE PRE-FABRICATION



TRAINS

VISION offer grooved piping system and pipe pre-fabrication for propulsion system and compressed air system of train, ensure running reliably, leakage free, spacer saving and maintenance simply.

RECOMMEND PRODUCTS

- 101 FLEXIBLE COUPLINGS
- 101H FLEXIBLE COUPLINGS
- PIPE PRE-FABRICATION



SHIPS

Ship like a mobile building, have process piping system to ensure sailing power, and public piping system to ensure production and life, no matter what type of system, VISION can offer total piping solution, leakage free, installation easily and maintenance simply.

RECOMMEND PRODUCTS

- GROOVED PIPING SYSTEM
- PLAIN END PIPING SYSTEM
- COMPACT FLANGE
- PIPE PRE-FABRICATION



MANUFACTURER & DISTRIBUTOR

- PIPING SYSTEM
- FIRE PROTECTION
- POWER TRANSMISSION



唯法博管道

INDUSTRIAL PIPING SOLUTION

- INDUSTRIAL PIPING
- PIPE FABRICATION
- TANK FABRICATION

VISION

Shanghai VISION founded in 1999, is the first company designed and produced grooved couplings and fittings in China, from 2012, we started to distribute global well-known brand fire protection products, serve in oil and gas, petrochemical, nuclear power plant, offshore platform and ships, offer high quality piping products, fire protection products, power transmission products and technical service to our customer.

Address: No. 221 Jinlan Rd. Jiading Industry Park, Shanghai
Tel: 0086-21-5954-6863
Fax: 0086-21-5954-3888
Email: shv@visioninc.cn
Website: www.visioninc.cn

V-FAB

V-FAB PIPING is a company of Shanghai VISION, founded in 2010, do the service with pipe fabrication and research of industrial piping solution, serve in municipal engineering, water and wastewater, mining and steel plant, offer total piping solution and technical service to our customer.

Address: No. 221 Jinlan Rd. Jiading Industry Park, Shanghai
TEL: 0086-21-5954-6863
FAX: 0086-21-5954-3888
Email: vfab@visioninc.cn
Website: www.visioninc.cn